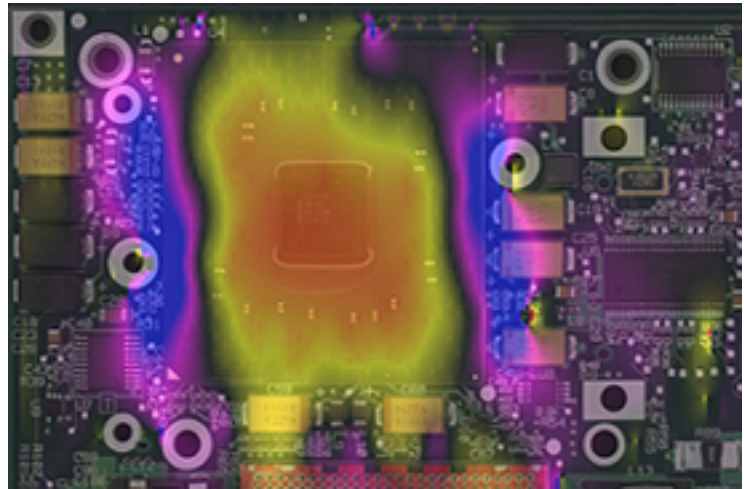


Board stress has become a major concern for most PCB manufacturer, with the introduction of larger surface mount components, higher density PCBs, and more brittle solders. Board stress can be predicted using sophisticated software tools, and real strain measurements can be achieved using strain gages. At ReMaTek, we have developed both techniques to better prevent PCB damages under test.

## Software simulation

Software analysis is conducted during the fixture design process using our unique Finite Difference Simulation tool. Our software tool not only lets us simulate forces involved on a UUT, but also the stiffening effect of the components on the PCB.



## Strain gage measurements

Strain gages are installed on your UUT, and measure PCB strains throughout the test process, under vacuum. Fully detailed report is supplied before fixture shipment.

